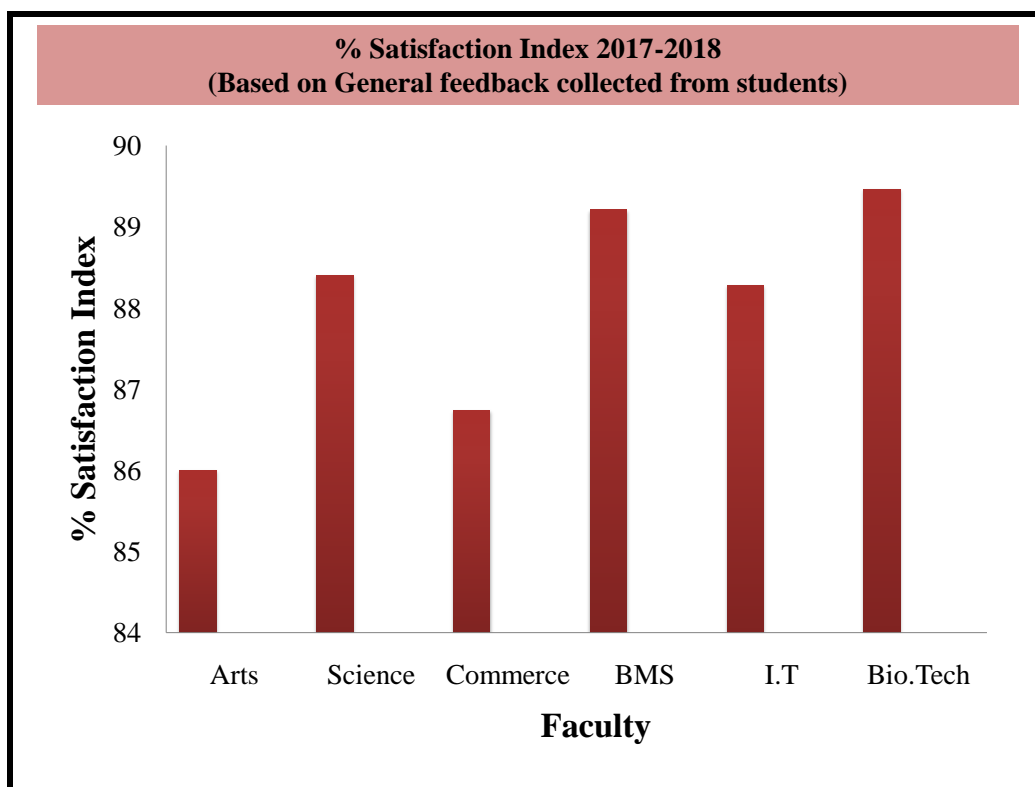
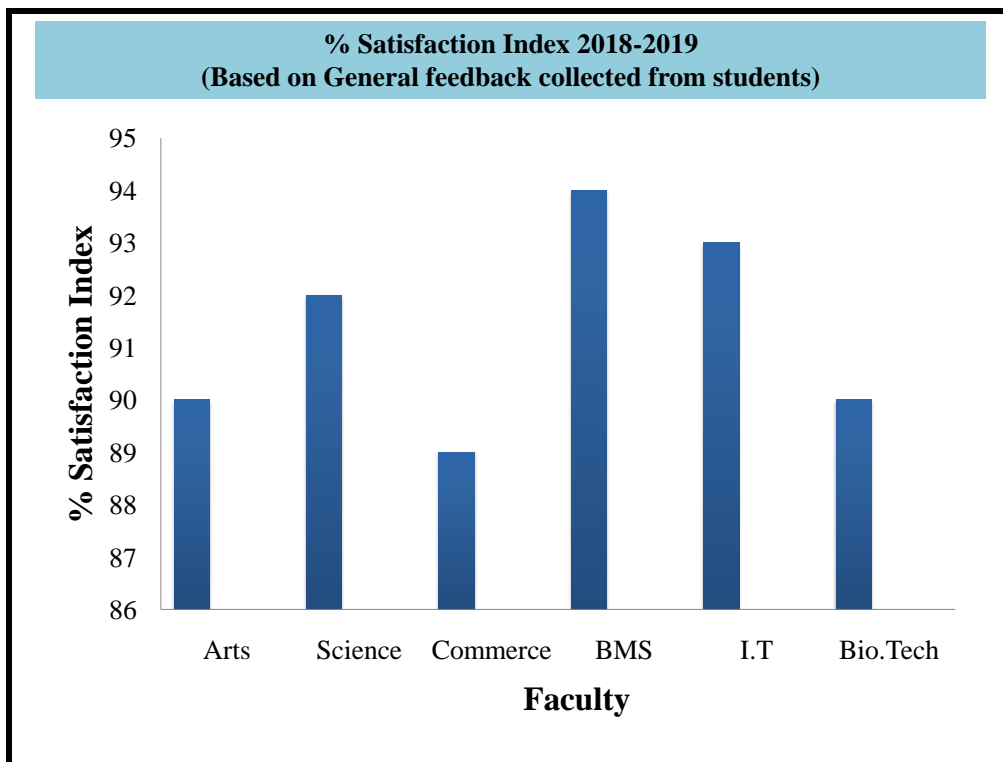
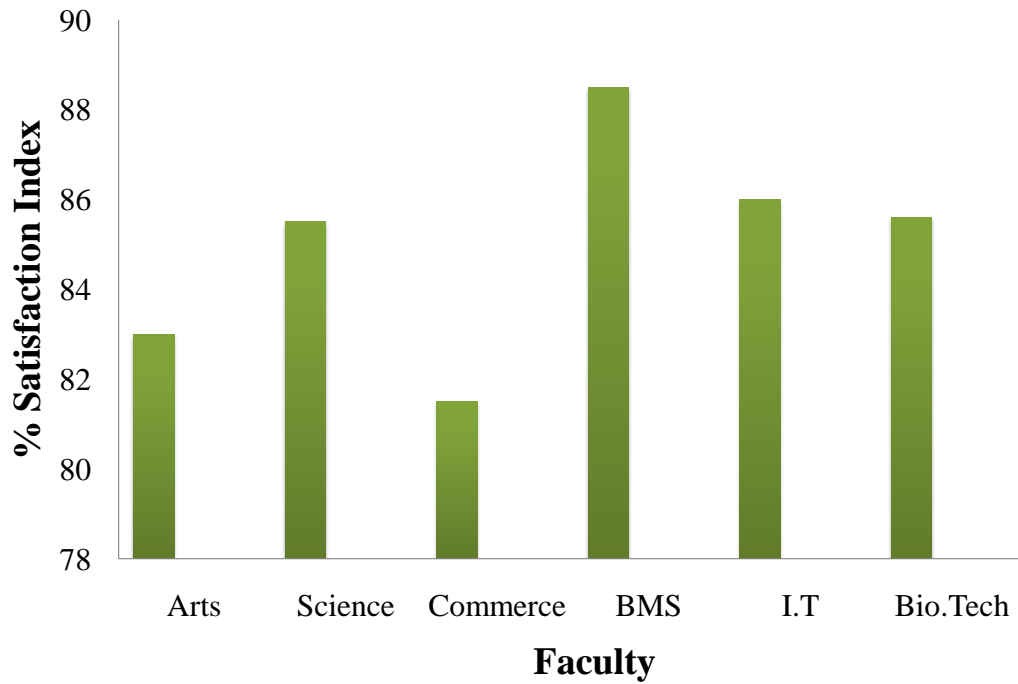


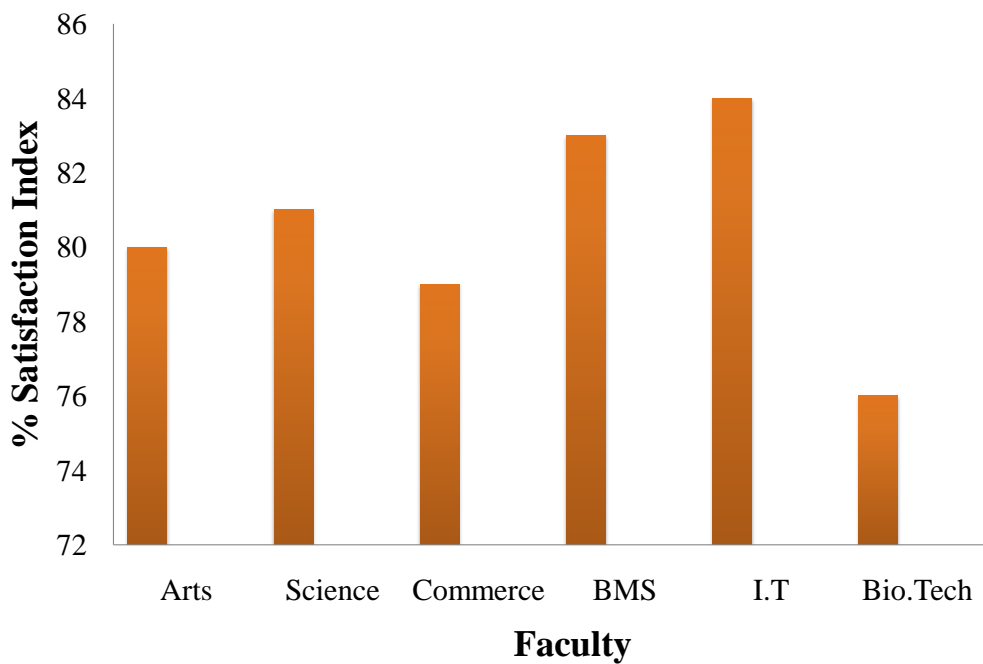
**K.M.E Society's
G.M.Momin Women's college
Feedback Analysis faculty wise**



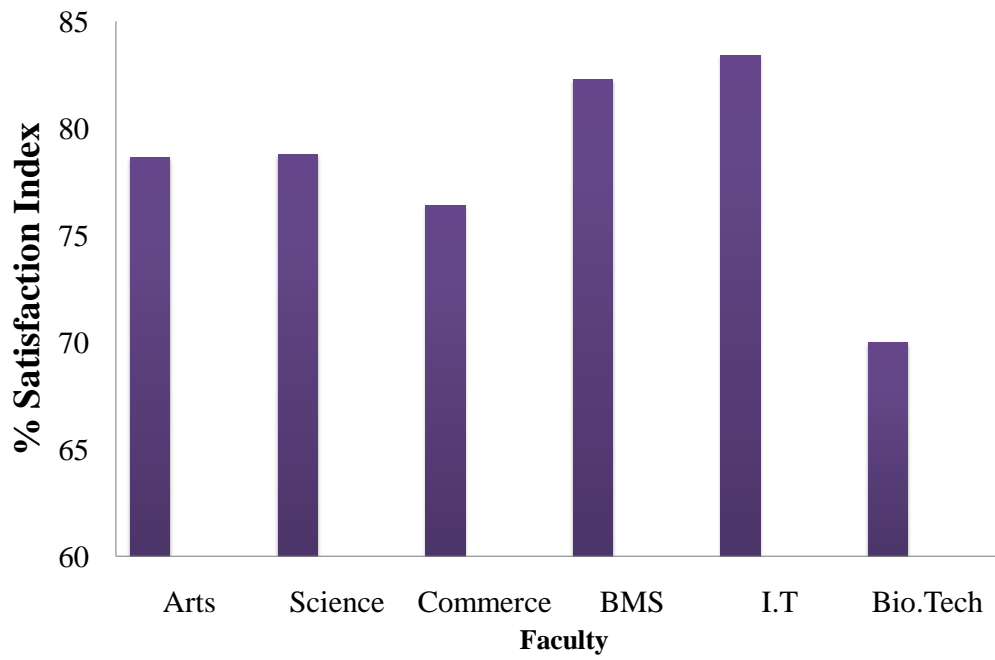
% Satisfaction Index 2016-2017
(Based on General feedback collected from students)



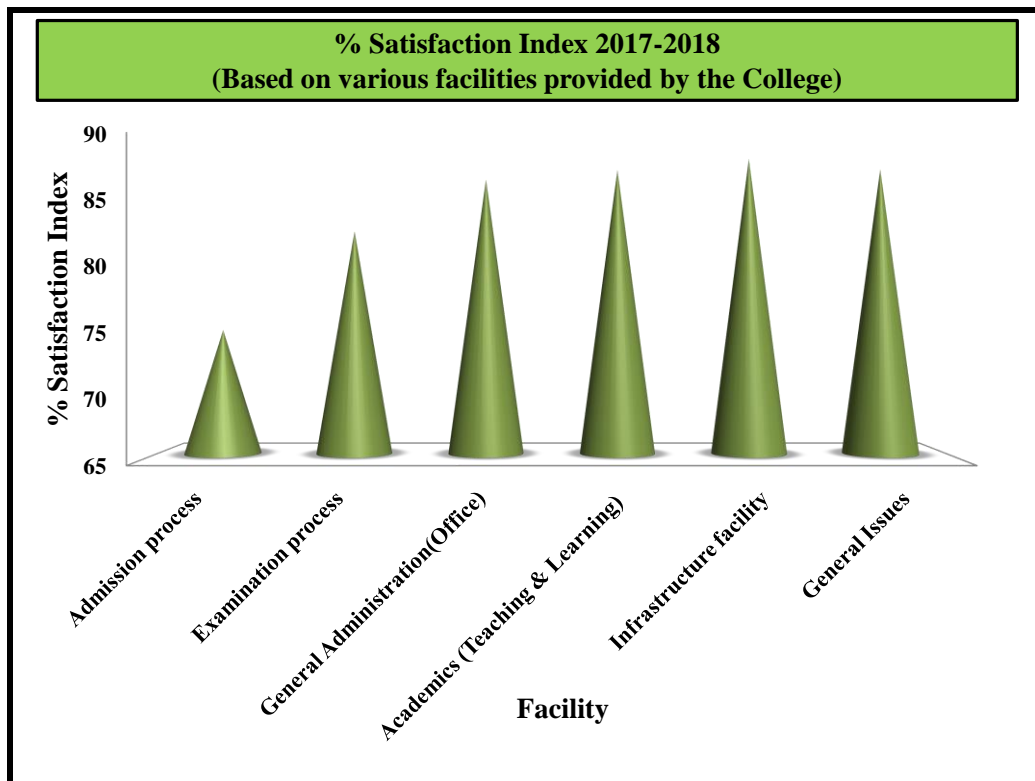
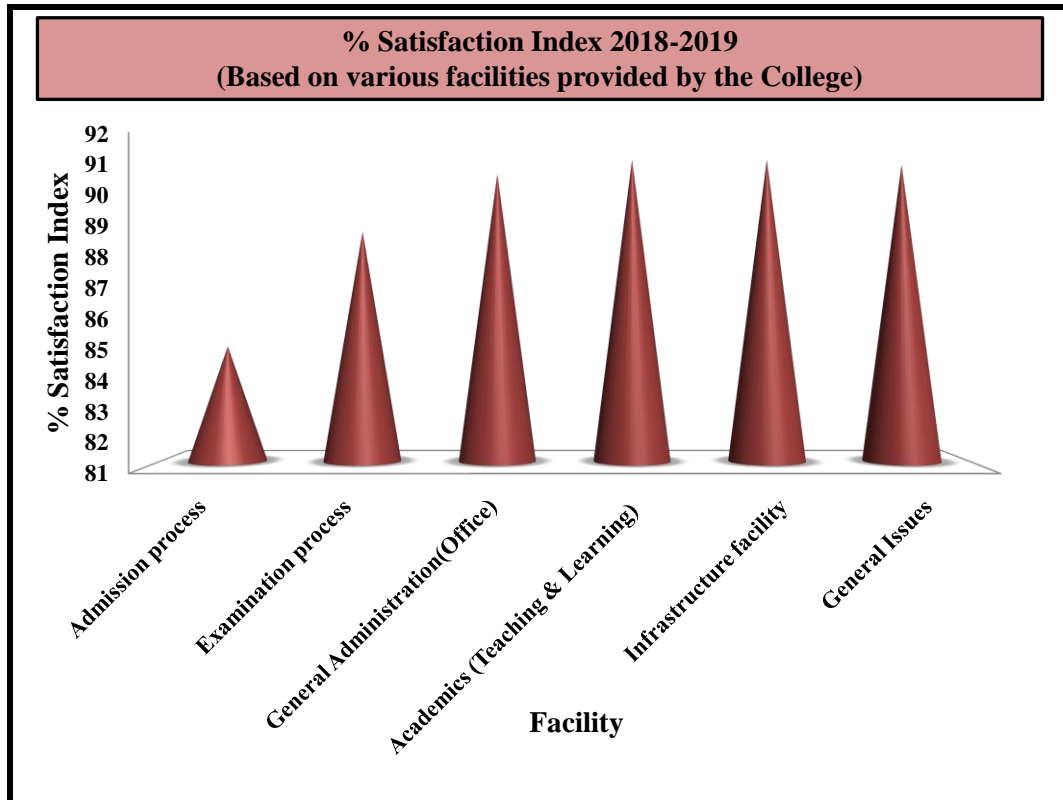
% Satisfaction Index 2015-2016
(Based on General feedback collected from students)

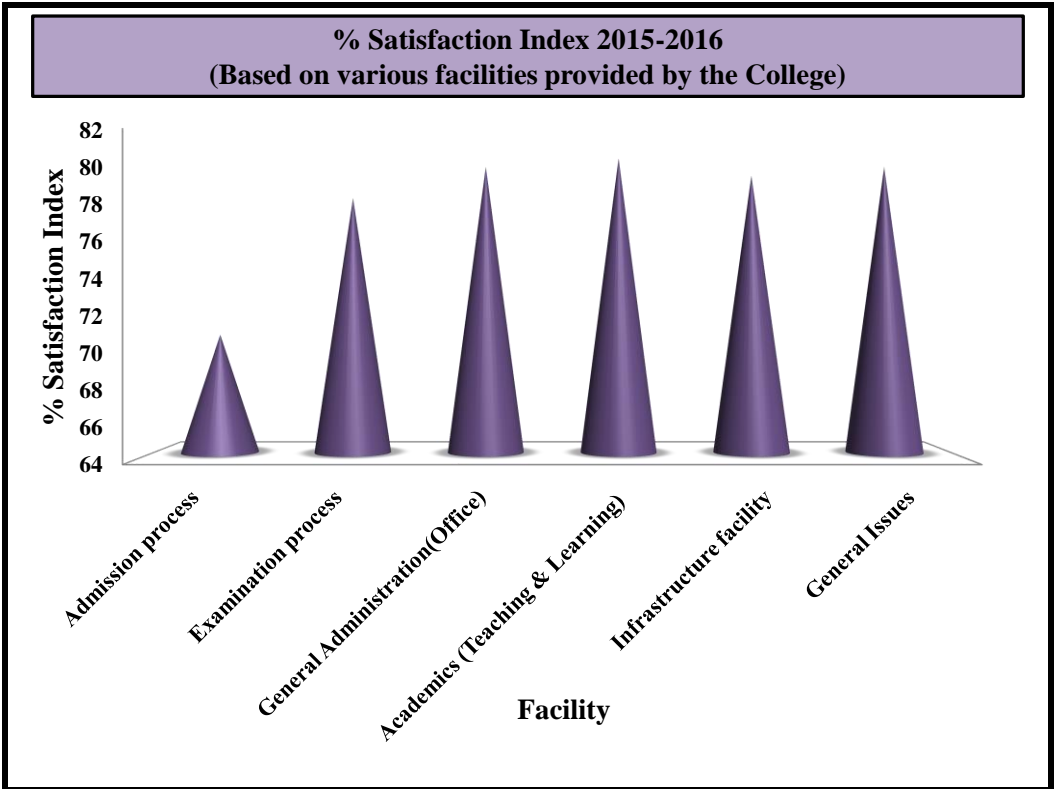
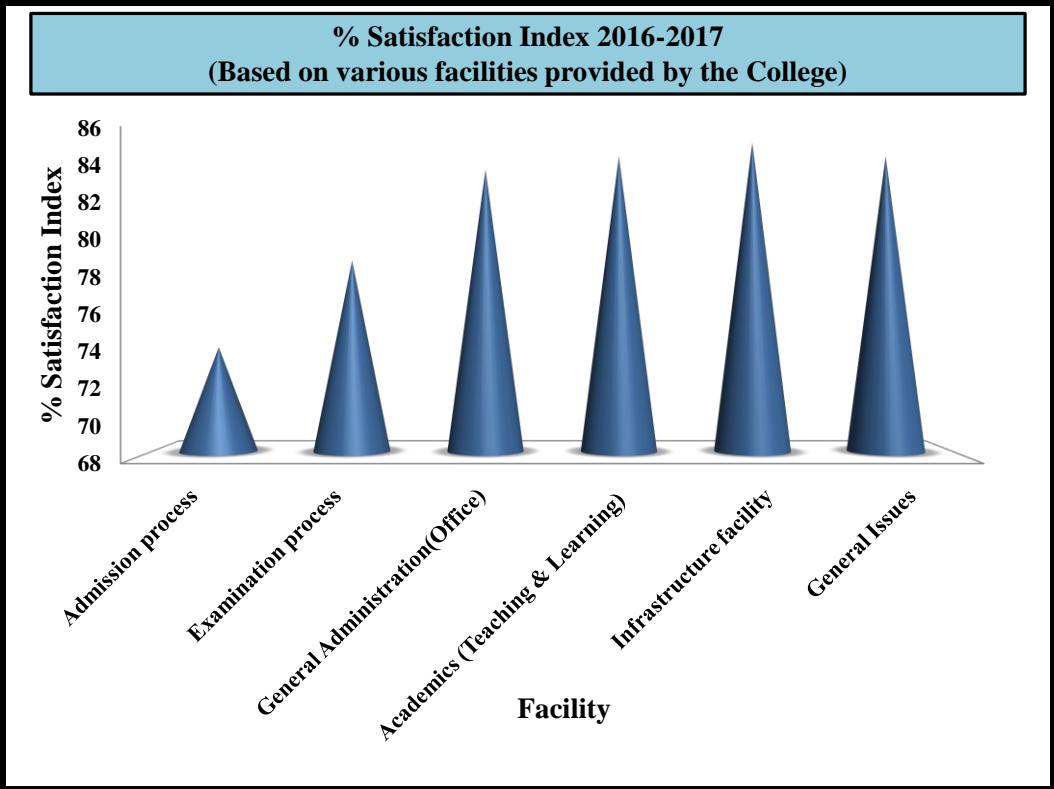


% Satisfaction Index 2014-2015
(Based on General feedback collected from students)

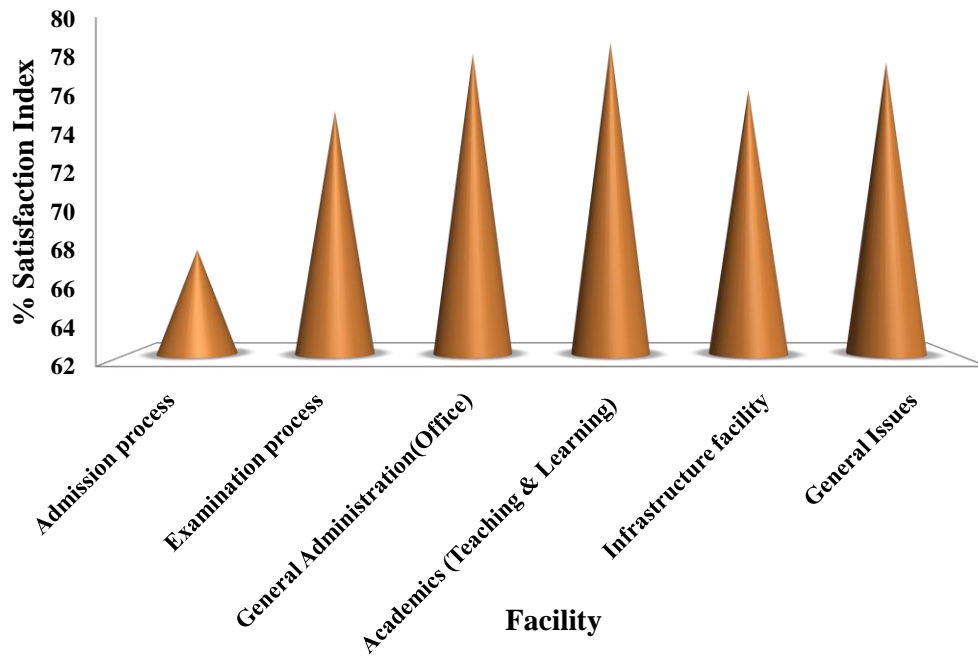


**K.M.E Society's
G.M.Momin Women's college
Feedback Analysis**





% Satisfaction Index 2014-2015
(Based on various facilities provided by the College)



K.M. E Society's
G.M.Momin Women's College
Details of online Feedback mechanism system
Student's Evaluation of teachers

The screenshot shows a web browser window with the URL docs.google.com/forms/d/1sxdZZco5gniporuZYIAtVYVZ_8n3tsRNeo8LUc4vZM4/edit. The form title is "Students' Evaluation of Teachers" and it has 848 responses. The form is divided into sections, and the current view is "Section 1 of 4". The form contains the following fields:

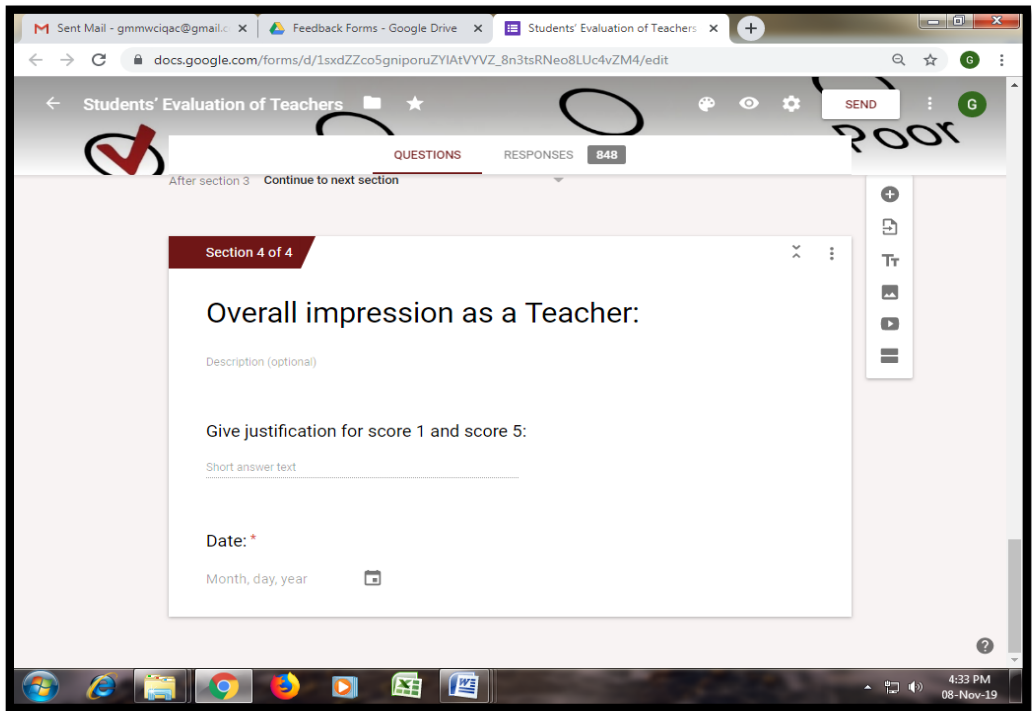
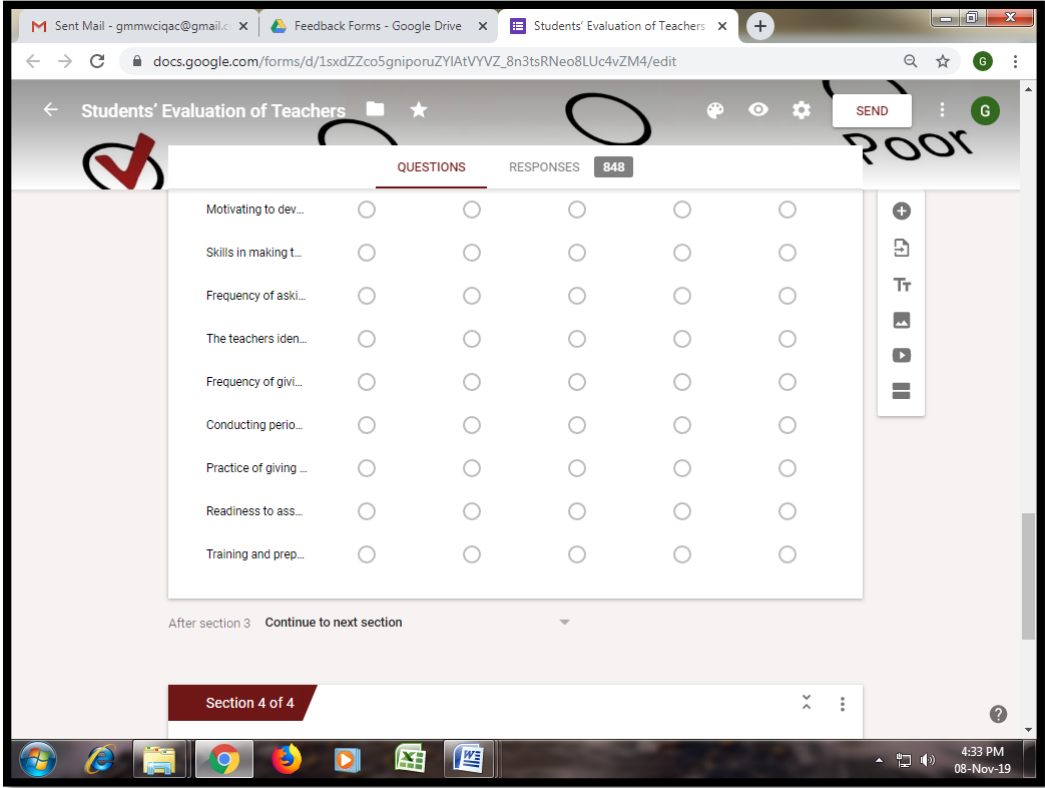
- Name of the Teacher:** * (Short answer text)
- Subject Taught:** * (Short answer text)
- Name of the Student:** * (Short answer text)

The background of the form has a watermark that says "Satisfactory Poor". The browser's taskbar at the bottom shows the time as 4:27 PM on 08-Nov-19.

The screenshot shows the same Google Forms interface, but now displaying "Section 2 of 4". The form contains the following fields:

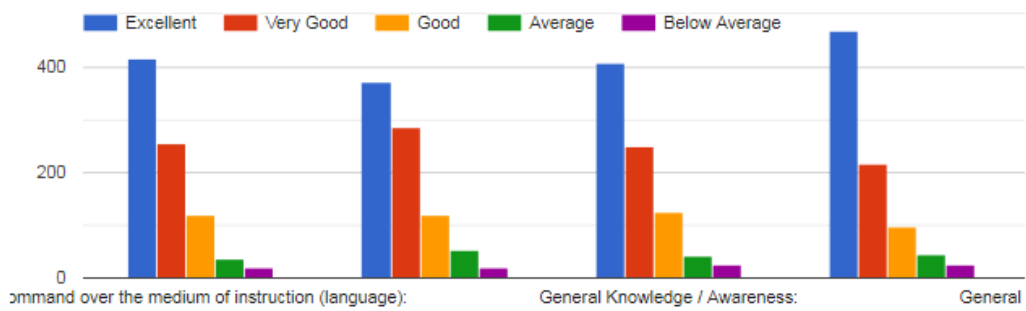
- Roll No/ Student ID:** * (Short answer text)
- Class:** * (Short answer text)

Below the second section, there is a button labeled "Continue to next section". The third section is partially visible and titled "General / Attitude related". The browser's taskbar at the bottom shows the time as 4:32 PM on 08-Nov-19.



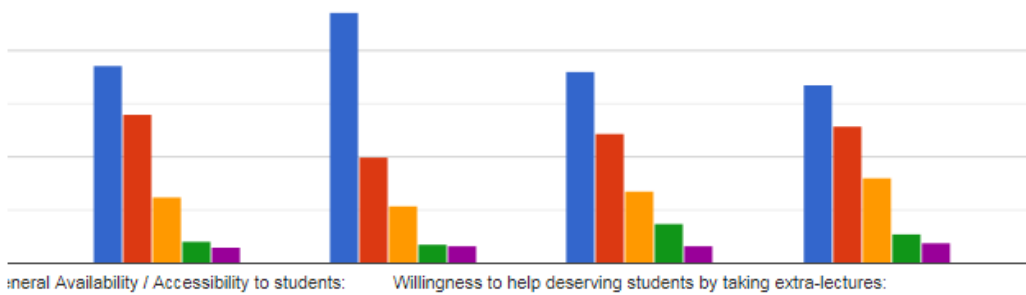
General / Attitude related

Command over the medium of instruction (language):

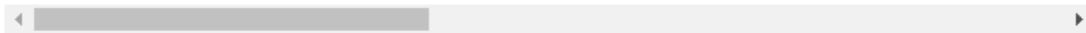
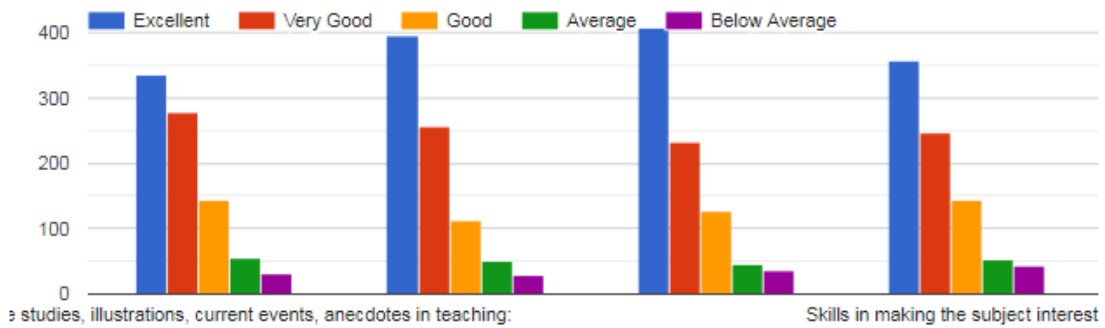


General / Attitude related

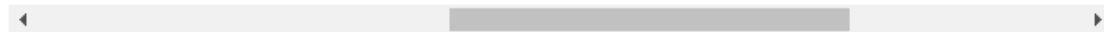
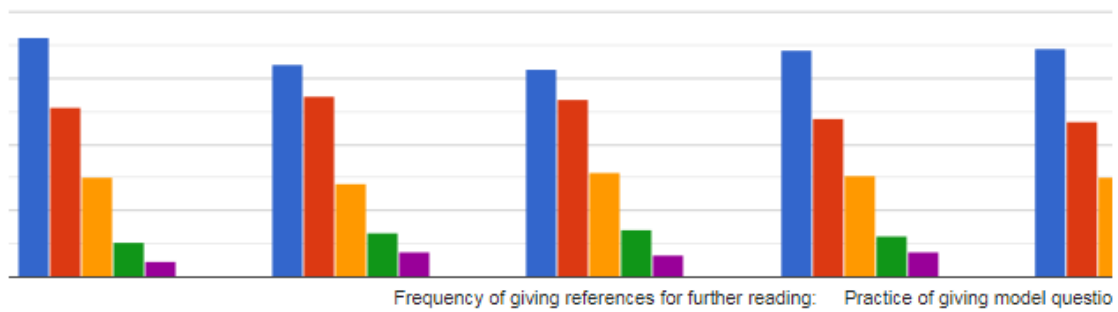
Command over the medium of instruction (language):



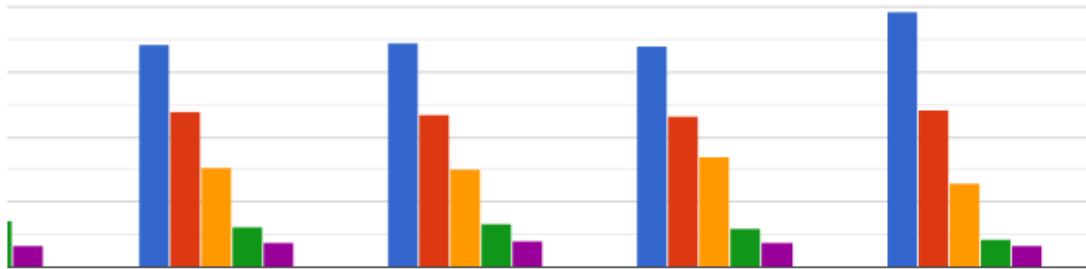
Subject Related



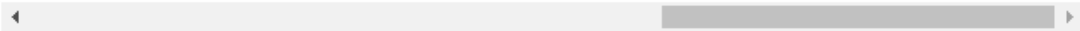
Subject Related



Subject Related

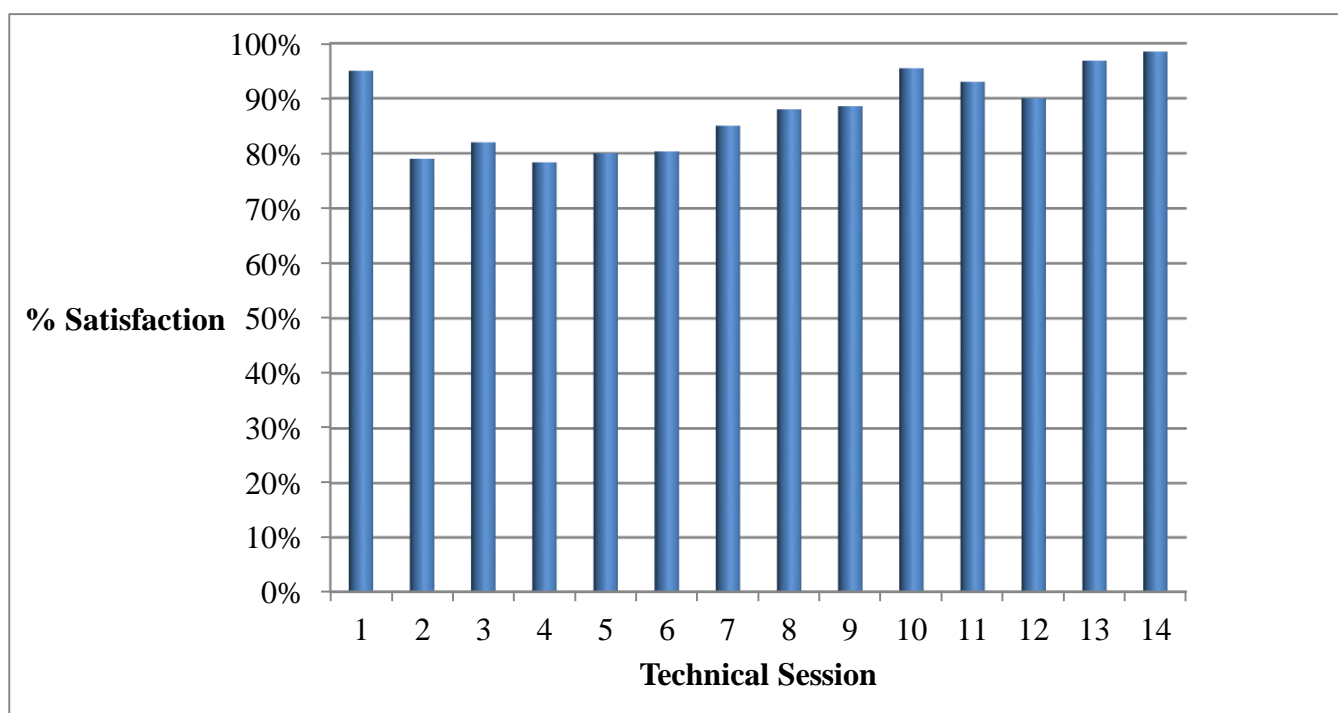


s for further reading: Practice of giving model questions at the end of a topic / portion:



Summer School (2017-2018)
Satisfaction Index

Technical Session No.	Title of the Session	% Satisfaction Index
1.	Hands on “Fascinating Experiments in Science”	95%
2.	Invited Talk “Micro to Macro	79%
3.	Workshop on “Basics and handling of Microscope”	82%
4.	Workshop on “Using Software for plotting graphs and data Analysis”	78.35%
5.	Invited Talk “Medical applications of LASER”	80%
6.	Invited Talk “Generating Research Idea”	80.33%
7.	Workshop on “Chocolate moulding and Cake baking”	85%
8.	Invited Talk “ Aquarium setting and ornamental fish”	88%
9.	Hands on Training on Gel Electrophoresis	88.57%
10.	Invited Talk “ Chromatin Remodelling factors: The Global regulators of gene expression”	95.45%
11.	Invited Talk “Recent Trends in Nanotechnology”	93%
12.	Hands on Training on “ Volumetric Measurements in the Laboratory”	90%
13.	Invited Talk “Rekindling the spirit of Research”	96.83%
14.	Workshop on “ Origami”	98.5%

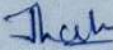


**K.M.E Society's
G.M.Momin Women's College
Feedback Analysis of Star activities
Under DBT Star College Scheme**

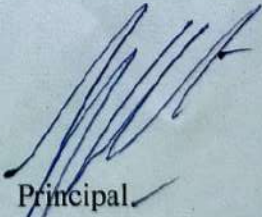


Action taken report March 2019
(Based on students feedback on General feedback form)

1. Considering the financial needs of our students' instalment facility for paying fees was continued for all UG/PG students. Scholarship Committee was motivated to guide students for various Scholarships so that maximum number of students avail the benefit of financial support.
2. Construction and upgradation work was initiated during vacations avoiding examination days so that students don't get disturbed during examination hours.
3. Teachers were instructed to increase the number of periodical tests and all the students specially the slow learners were advised to practice the questions bank thoroughly to improve their results.
4. Discipline Committee was strengthened to come out with more strict laws specially the use of mobile phones in campus.
5. Time table Committee was guided to prepare time table effectively minimizing the gap between the lectures.
6. Housekeeping Committee was instructed to keep regular checks on cleanliness of classrooms, auditorium, canteen etc.
7. Canteen Committee was instructed to keep regular checks on quality of food in canteen.
8. Students demand for TYBA (Psychology) was put forward to management and LIC visit done by the University.
9. Cycles have been repaired and made available to students.
10. Students were permitted to carry Tiffins in canteen
11. Place for Namaaz in auditorium and Commerce staff room on fourth floor was provided on students' demand in main building also
12. Request of some students to occupy them in earn and learn scheme was fulfilled.

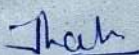

IQAC Coordinator




Principal
K.M.E. Society's G.M.Momin
Women's College, Bhiwandi
Dist. Thane Pin 421 302

Action taken report March 2018
(Based on students feedback on General feedback form)

1. Housekeeping Committee was instructed to keep regular checks on cleanliness of classrooms, auditorium, canteen etc and one office staff was given the responsibility of maintenance of lights, fans in classrooms.
2. Time table Committee was guided to prepare time table effectively minimizing the gap between the lectures.
3. Lift facility was allowed to students with genuine need.
4. Latest collection of reference books and journals in library is updated.
5. Training in ICT was given to staff and more ICT is used by the teachers for better understanding of concepts by the students.
6. Concept of zero hour was introduced on all Saturdays so that students don't miss their studies during extracurricular activities
7. Understanding the need for expansion in infrastructure, Multipurpose Hall was inaugurated along with 02 classrooms, 01 common room and 01 room with indoor games facility

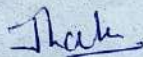

IQAC Coordinator


Principal
K.M.E. Society's G.M.Momin
Women's College, Bhiwandi
Dist. Thane Pin 421 302




Action taken report March 2017
(Based on students feedback on General feedback form)

1. The wards of staff employed in the K.M.E. Society are given preference for admission under the management quota seats. B.Sc. ID (Interdisciplinary Studies) was introduced to fulfil the requirements of students seeking admissions in our College
2. Various clubs and associations were motivated to organize various activities to overcome stage fear of students and to improve communication skills of students.
3. Housekeeping Committee was instructed to take special care on maintenance of lights, fans in classrooms, auditorium and canteen etc.
4. Water coolers in canteen and on third floor were repaired and drinking water was made available to students.


IQAC Coordinator




Principal
K.M.E. Society's G.M.Momin
Women's College, Bhiwandi
Dist. Thane Pin 421 302

Action taken Report March 2016
(Based on students feedback on General feedback form)

1. Instalment facility in fees was continued for students considering the economically weak background of students.
2. Vehicles are arranged by the college free of charge for the students participating in intercollegiate events.

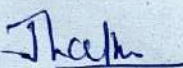
Shah
IQAC coordinator



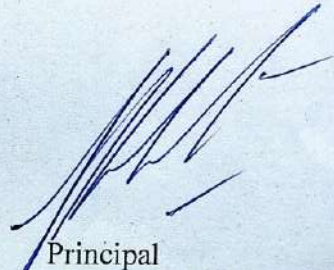
[Signature]
Principal
K.M.E. Society's G.M.Momin
Women's College, Bhiwandi
Dist. Thane Pin 421 302

Action taken Report March 2015
(Based on students feedback on General feedback form)

1. To achieve academic excellence, teachers were encouraged to participate in various curriculum based value added programmes
2. Monitoring of teaching learning process through students feedback was started
3. Free internet facility for staff and students was given
4. To achieve students' satisfaction in examination evaluation process Cross checking committee was established.
5. To provide printing and photocopying facility to students and staff, printer and Reprographic machine was installed in College.


IQAC Coordinator




Principal
K.M.E. Society's G.M.Momin
Women's College, Bhiwandi
Dist. Thane Pin 421 302



K.M.E. SOCIETY'S
G.M. MOMIN WOMEN'S COLLEGE

(Affiliated to the University of Mumbai, ISO 9001:2008 Certified)
Rais High School Campus, Thana Road, Bhiwandi 421302, Dist.Thane, Maharashtra

STUDENTS FEEDBACK (GENERAL)

1. **Name of the student:** _____
2. **Class/ Subject:** _____
3. **Academic year:** _____
4. **Student Perception:** In the table given below, several elements are listed. Please circle the score you intend to give (from a scale of 1 to 5. 1 being the lowest and 5 being the highest)

Sr. No.	Elements	Score (please circle)
A.	General Administration(Office)	
1.	Services provided by office	1 2 3 4 5
2.	General behaviour of office staff	1 2 3 4 5
3.	Availability of staff	1 2 3 4 5
B.	Academics	
1.	Current Syllabus	1 2 3 4 5
2.	Ability of teachers to teach	1 2 3 4 5
3.	Regularity in taking lectures/practical	1 2 3 4 5
4.	Attitude of teachers towards helping students	1 2 3 4 5
5.	General Availability/Accessibility to students	1 2 3 4 5
6.	Completion of syllabus	1 2 3 4 5
7.	Revision lectures conducted	1 2 3 4 5
8.	Discussions/Seminars/Class Test/ Problem solving during lectures (student centric methods)	1 2 3 4 5
9.	Use of ICT for effective teaching	1 2 3 4 5
10.	Efforts taken by the department to conduct guest lectures by prominent personalities	1 2 3 4 5
11.	Efforts taken for slow learners	1 2 3 4 5
12.	Interaction with parents	1 2 3 4 5
13.	Mentoring to students for academic and stress related issues	1 2 3 4 5
14.	Innovation and creativity in teaching	1 2 3 4 5
15.	Encouragement of research work/projects	1 2 3 4 5
16.	Excursion/Educational tours/Industrial visit	1 2 3 4 5
C.	Infrastructure	
1.	Laboratory	1 2 3 4 5
2.	Library	1 2 3 4 5

3.	Computer/Internet facility	1	2	3	4	5
4.	Classroom facility	1	2	3	4	5
5.	Sports activities	1	2	3	4	5
6.	Extra-curricular activities/NSS/DLLE/Cultural etc.	1	2	3	4	5
7.	Canteen facility	1	2	3	4	5
8.	Common room facility/Meditation room	1	2	3	4	5
9.	Drinking water facility	1	2	3	4	5
10.	Housekeeping/General cleanliness	1	2	3	4	5
11.	Lighting and Ventilation in classroom	1	2	3	4	5
12.	Sound system/teaching aid in class room	1	2	3	4	5
13.	Health care facility	1	2	3	4	5
14.	Safety in College Campus	1	2	3	4	5
D.	Admission Process					
1.	Display of notices	1	2	3	4	5
2.	Technical help provided to the students during admission	1	2	3	4	5
3.	General Availability and attitude of staff towards helping students	1	2	3	4	5
E.	Examination process					
1.	Display of Notices, Time tables, Result Declaration on time	1	2	3	4	5
2.	General Availability and attitude of staff towards helping students	1	2	3	4	5
F.	General Issues					
1.	Information available on website concerning the College	1	2	3	4	5
2.	Conduct of Conferences, workshops, Seminars, Hands on Sessions etc.	1	2	3	4	5
3.	Awareness and accessibility of Counselling Cell	1	2	3	4	5
4.	Various Certificate/add on courses conducted by the College	1	2	3	4	5
5.	Awareness about anti ragging committee	1	2	3	4	5
6.	Awareness about Women development Cell/Internal Complaint Cell	1	2	3	4	5

➤ Justification for score 1 and score 5:

➤ General Comments/Suggestions (if any):

Date: _____

Signature: _____



K.M.E. SOCIETY'S

G.M. MOMIN WOMEN'S COLLEGE

(Affiliated to the University of Mumbai, ISO 9001:2008 Certified)

Rais High School Campus, Thana Road, Bhiwandi 421302, Dist.Thane, Maharashtra

STUDENTS FEEDBACK ON ADMISSION PROCESS/COMMITTEE

1. **Name of the student:** _____
2. **Class/ Subject:** _____
3. **Academic year:** _____
4. **Student Perception:** In the table given below, several elements are listed. Please circle the score you intend to give (from a scale of 1 to 5. 1 being the lowest and 5 being the highest)

Sr. No.	Elements	Score (please circle)
1.	Attitude of Admission Committee members towards students	1 2 3 4 5
2.	Display of Time Table on time	1 2 3 4 5
3.	Willingness to help deserving students	1 2 3 4 5
4.	General availability and services	1 2 3 4 5
5.	Conduct of admission process in proper time frame	1 2 3 4 5

Suggestions (if any): _____

Signature



K.M.E. SOCIETY'S

G.M. MOMIN WOMEN'S COLLEGE

(Affiliated to the University of Mumbai, ISO 9001:2008 Certified)

Rais High School Campus, Thana Road, Bhiwandi 421302, Dist.Thane, Maharashtra

STUDENTS FEEDBACK ON EXAMINATION PROCESS/COMMITTEE

1. **Name of the student:** _____
2. **Class/ Subject:** _____
3. **Academic year:** _____
4. **Student Perception:** In the table given below, several elements are listed. Please circle the score you intend to give (from a scale of 1 to 5. 1 being the lowest and 5 being the highest)

Sr. No.	Elements	Score (please circle)				
1.	Attitude of Examination Committee members towards students	1	2	3	4	5
2.	Display of Time Table on time	1	2	3	4	5
3.	Willingness to help deserving students	1	2	3	4	5
4.	General availability and services	1	2	3	4	5
5.	Conduct of examination in proper time frame	1	2	3	4	5

Suggestions (if any): _____

Signature



K.M.E. SOCIETY'S

G.M. MOMIN WOMEN'S COLLEGE

(Affiliated to the University of Mumbai, ISO 9001:2008 Certified)

Rais High School Campus, Thana Road, Bhiwandi 421302, Dist.Thane, Maharashtra

Students' Evaluation of Teachers

Students are requested to objectively express their evaluation of teaches based on FIVE point- scale: [5] = Excellent, [4] = Very Good, [3] = Good, [2] = Average and [1] Below Average.

Students have to write in the [BOX] only the figure 1, 2, 3, 4 or 5 as the case may be. You may reveal your identity, if you so desire.

Name of the teacher _____ Subject taught _____

Students Name & Roll No. (Optional) _____ Class _____

A. General / Attitude related

- * Command over the medium of instruction (language)
- * Class control
- * General Knowledge / Awareness
- * Regularity in taking lectures and practical's
- * Skills in explaining difficult points
- * General Availability / Accessibility to students
- * Clarity in approach / thinking
- * Attitude towards students: friendly and motivating
- * Willingness to help deserving students by taking extra-lectures etc.
- * Attitudes towards the subject taught
- * Usefulness in counselling: personal matters/ career/ placement etc.
- * Skills in motivating students for extracurricular activities
- * Teacher's participation in organizing extra- curricular activities.

B. Subject related

- * Command over the subject
- Use of case studies, illustrations, current events, anecdotes in teaching
- Readiness to resolve students' doubt/ questions etc.
- * Motivating to develop interest in the subject for higher studies.
- * Skills in making the subject interesting
- * Frequency of asking short questions in the class while teaching
- * Use of interactive teaching – seminar, tutorials, quiz, assignments etc.
- * Frequency of giving References for further reading
- Conducting periodic tests/ question answer sessions
-
- Practice of giving model questions at the end of a topic / portion
- Readiness to asses model answers submitted by students.
-
- Training and preparing students for college / university examinations

C. Overall impression as a teacher

D. Give justification for score 1 and score 5:

Signature